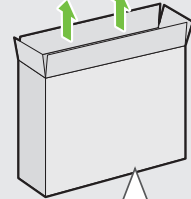
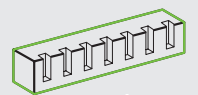
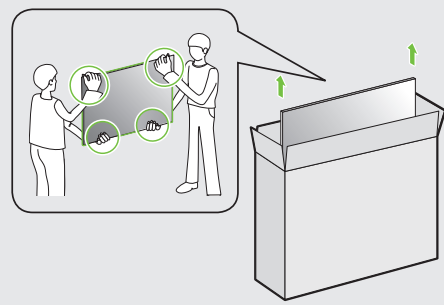


1

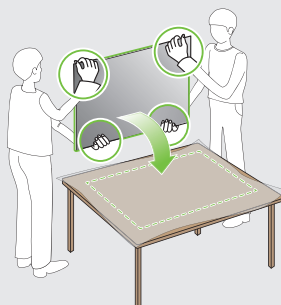
49/50/55UN73*



2

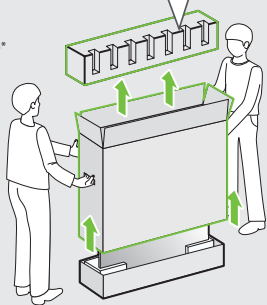


3

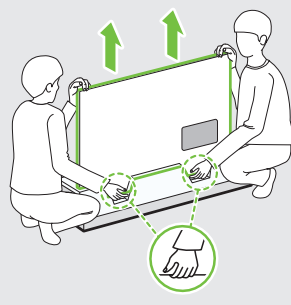


1

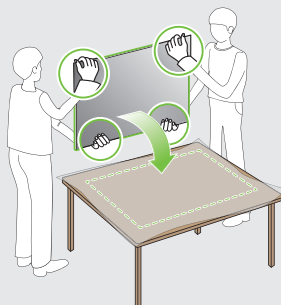
65/70UN73*



2



3



English • Read Safety and Reference.

Русский • Прочтите Руководство по технике безопасности.

Українська • Прочитайте "Правила безпеки та довідкова інформація".

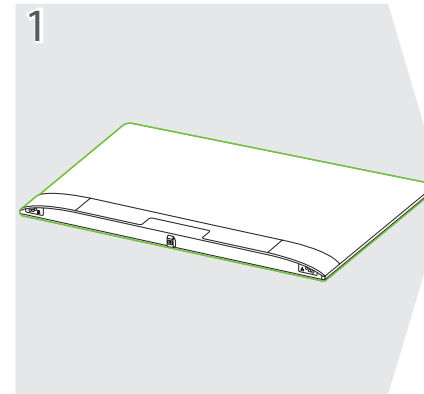
Қазақша • Қауіпсіздік нұсқаулығын оқыңыз.

O'zbekcha • Xavfsizlik bo'yicha ko'rsatmalar va havolalar'ni o'qib chiqing.

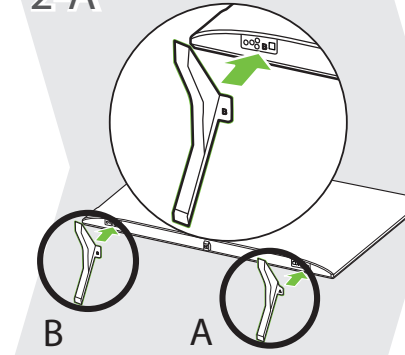
Монгол • Аюулгүй ажиллагааны зааварчилгааг уншина уу.

Напечатано в России
 Надруковано в Росії
 Resейде басып шығарылған
 P/NO: MFL71692404 (2002-REV00)

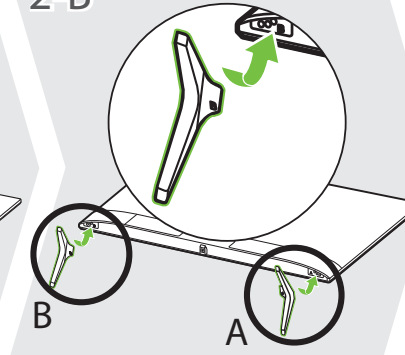
⊕ : Depending on model / В зависимости от модели / Залежно від моделі / Үлгіге байланысты / Rusumiga qarab / Загвараас хамаарна



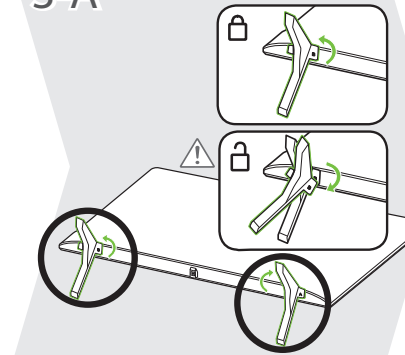
2-A 49/50/55/65UN73*



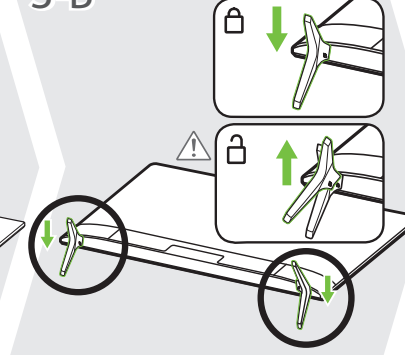
2-B 70UN73*



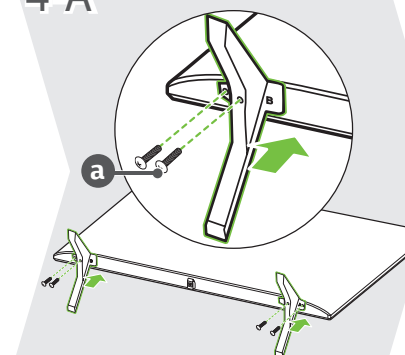
3-A 49/50/55/65UN73*



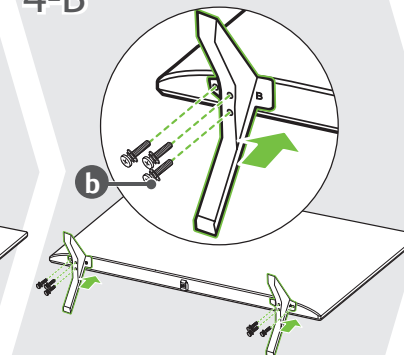
3-B 70UN73*



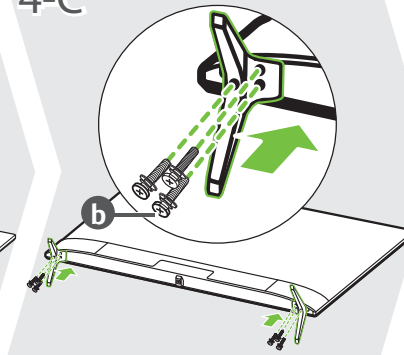
4-A 49/50/55UN73*



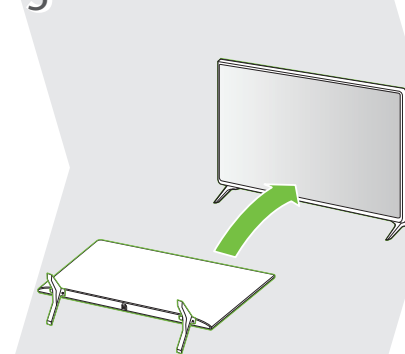
4-B 65UN73*



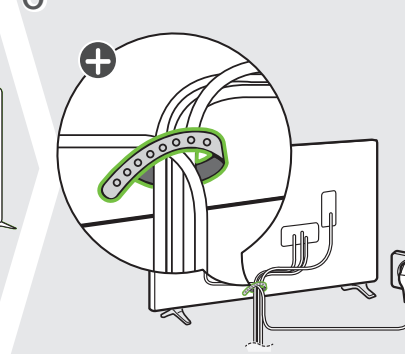
4-C 70UN73*

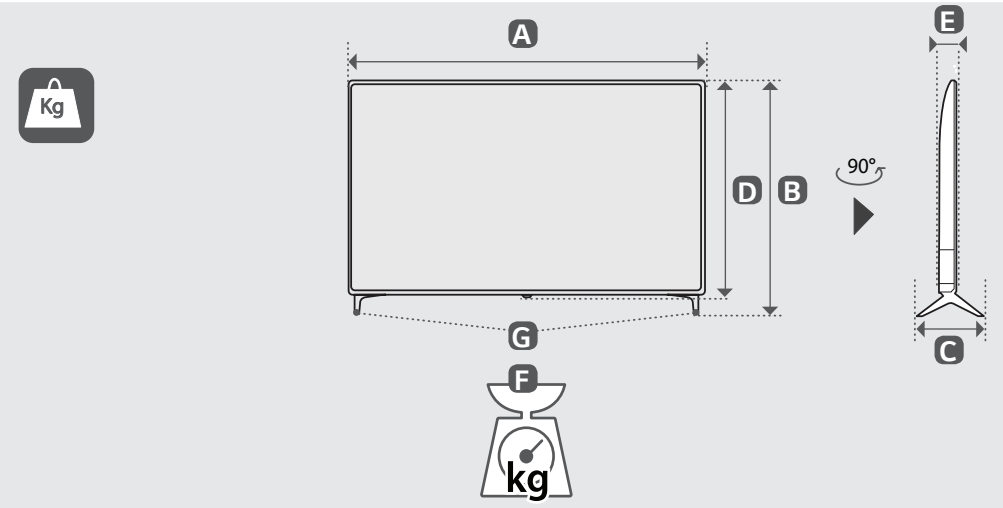
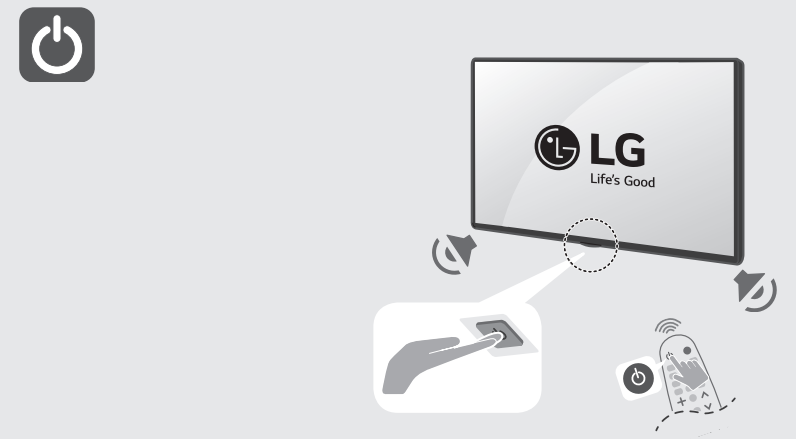
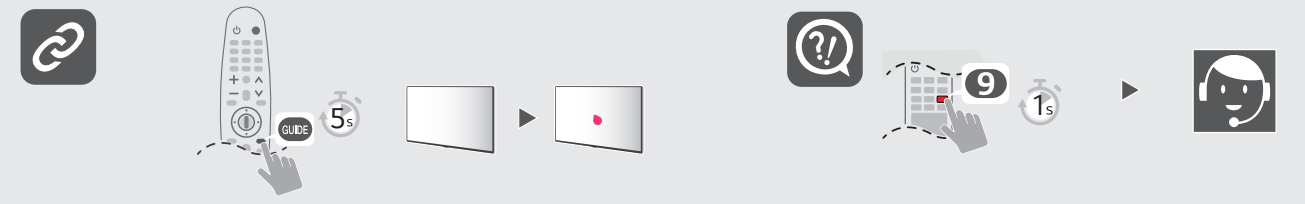
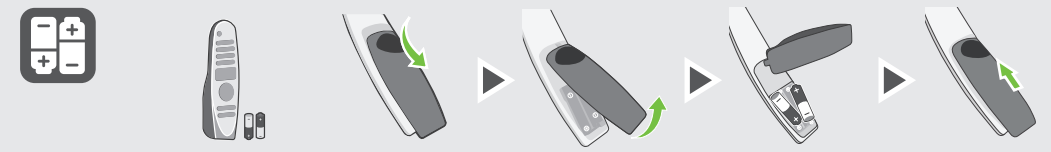
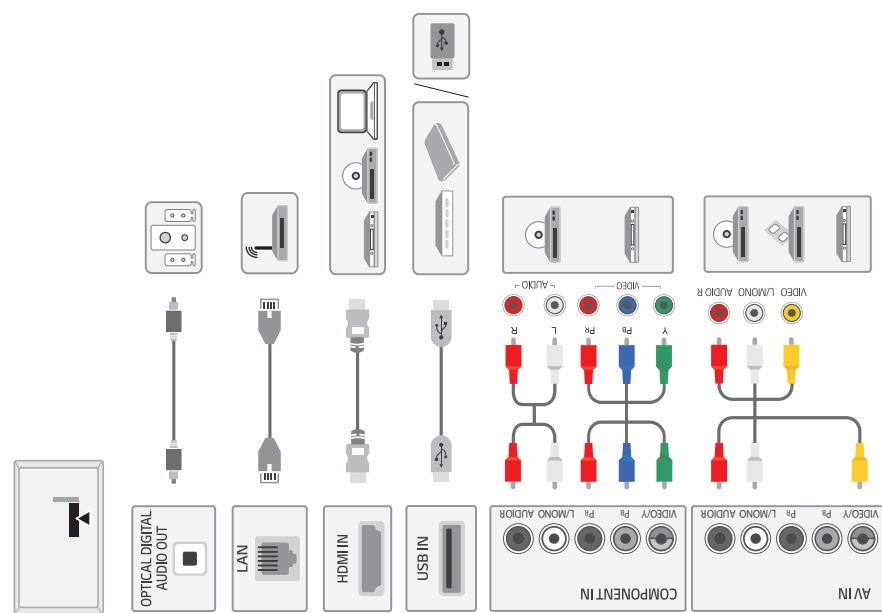
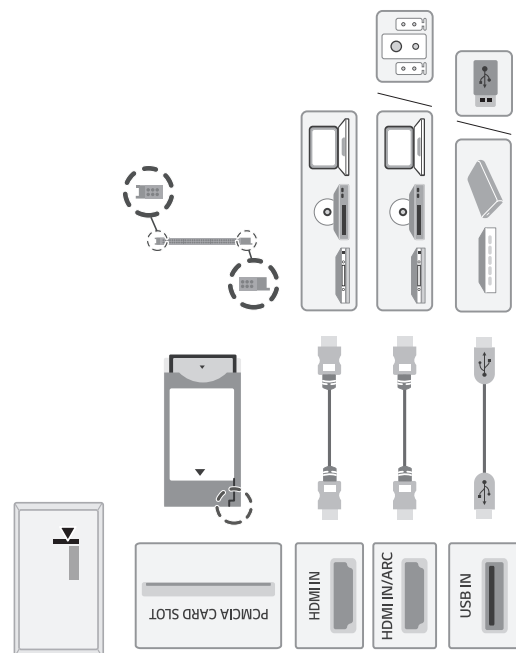


5



6





	A	B	C	D	E	F	F-G
	(mm)				(kg)		
49UN73003LA 49UN73006LA 49UN73506LB	1110	704	232	650	81.1	11.3	11.1
50UN73003LA 50UN73006LA 50UN73506LB	1130	716	232	663	86.3	11.5	11.3
55UN73003LA 55UN73006LA 55UN73506LB	1244	781	232	726	87.1	14.5	14.3
65UN73003LA 65UN73006LA 65UN73506LB	1463	910	271	850	87.8	21.6	21.3
70UN73506LB	1578	974	298	913	91.1	31.3	30.7
Требования к электропитанию Вимоги до електроживлення Електрүтүтүнү шарттары				AC 100-240 V ~ 50 / 60 Hz			